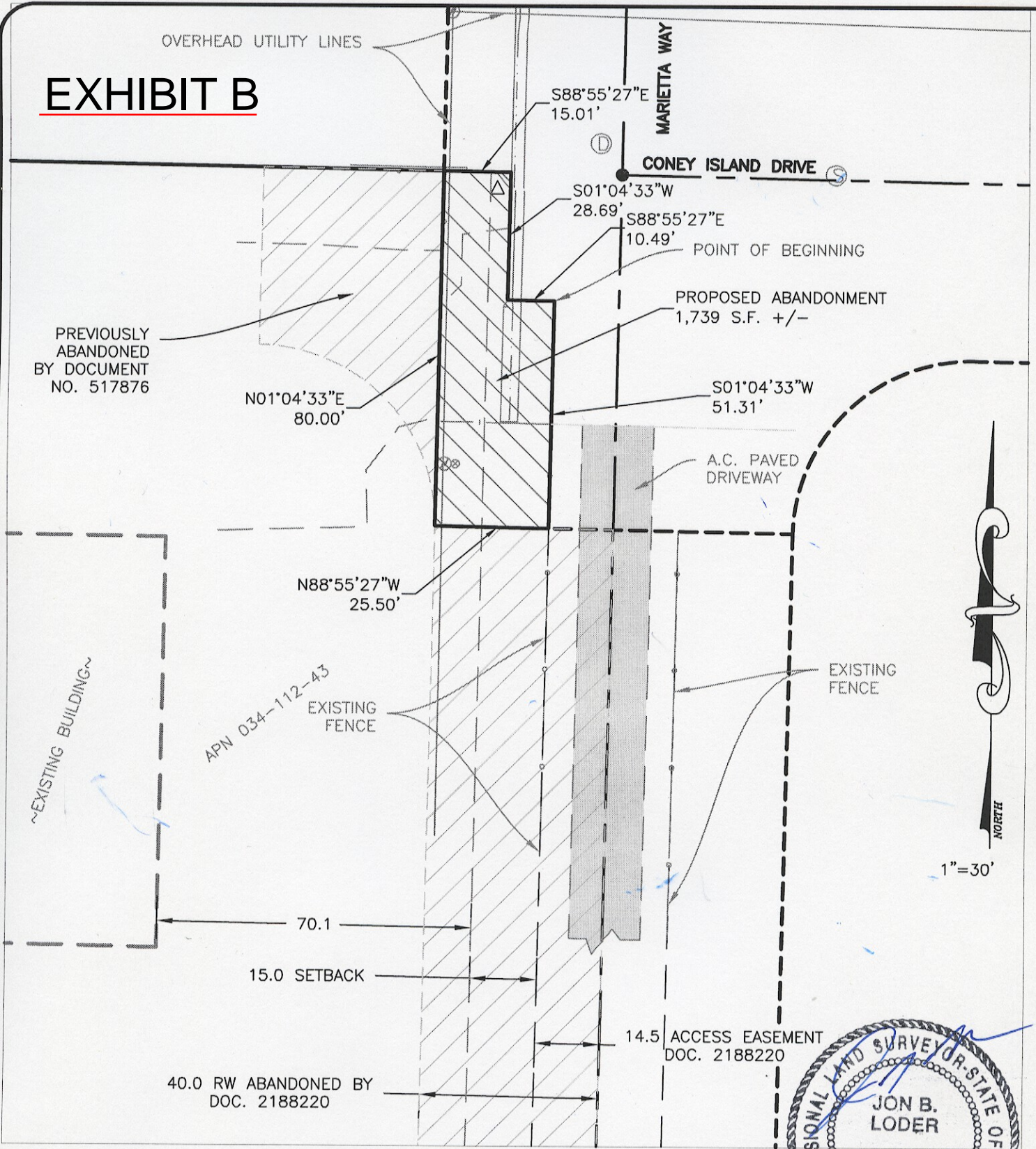


OVERHEAD UTILITY LINES

EXHIBIT B

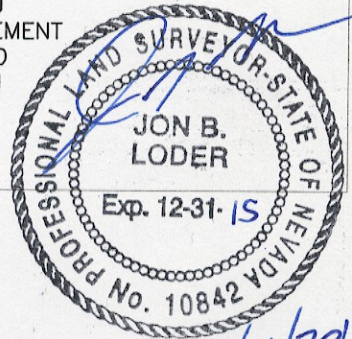


REQUEST FOR ABANDONMENT

OF
 A PORTION OF MARIETTA WAY
 SITUATE IN THE NE 1/4 OF SECTION 17, T.19 N., R.20 E., M.D.M.
 WASHOE COUNTY

SPARKS

NEVADA



399 GREG STREET
 SPARKS, NV 89431
 (775)786-1441

SHEET

1 OF 1